

# AK654C

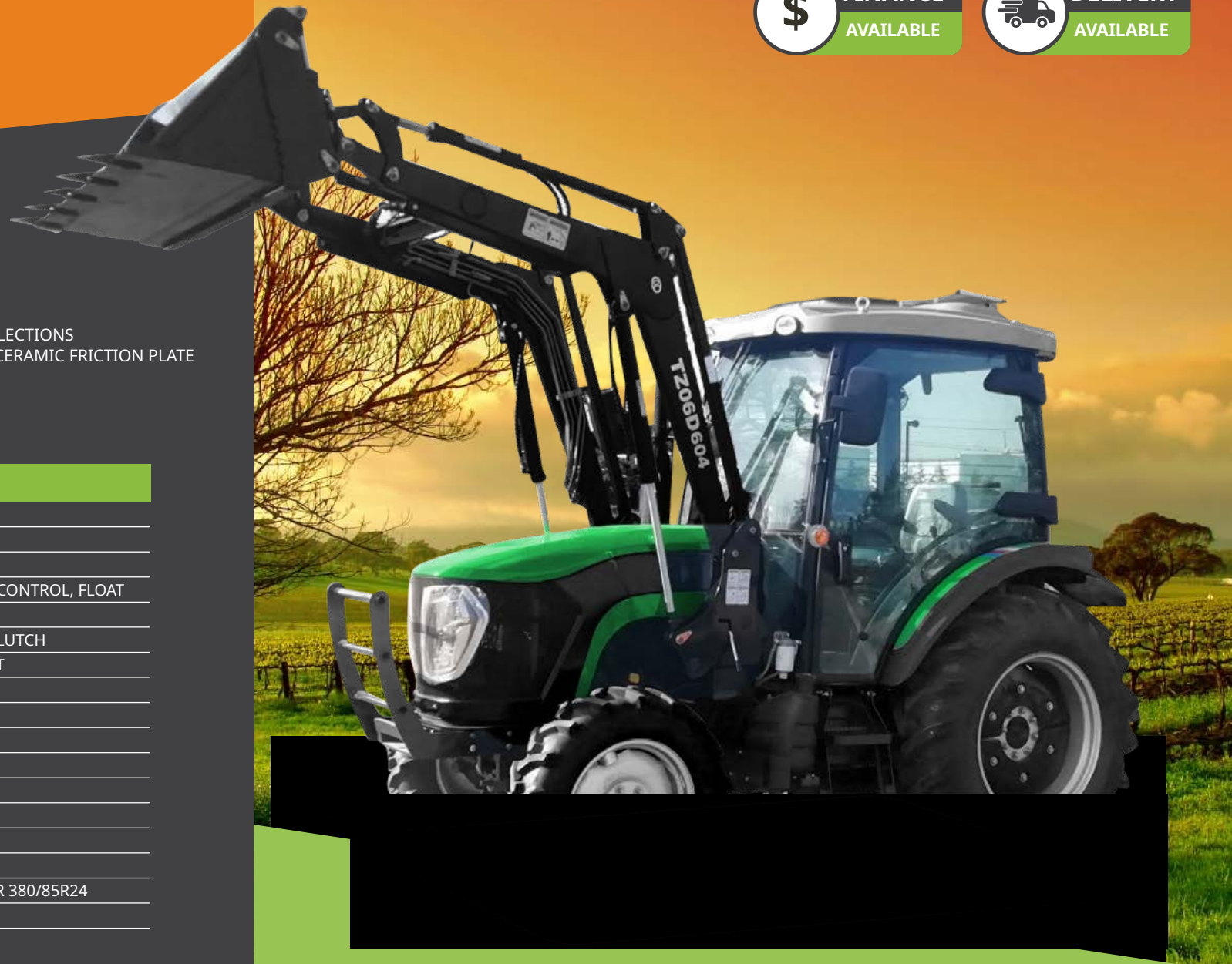
## 65HP CABIN TRACTOR



- 65HP 4WD WITH FRONT END LOADER
- EURO QUICK HITCH FEL 4 IN 1 BUCKET
- 800KG FRONT END LOADER SWL
- DEDICATED HYDRAULIC PUMP
- 3PL POSITION AND FORCED LIFT
- POWER STEERING
- FLAT AND CLEAR DECK WITH SIDE PLACED GEAR SELECTIONS
- 10 INCH DUAL FUNCTIONAL CLUTCH WITH METAL CERAMIC FRICTION PLATE
- HEAVY DUTY FRONT AXLE AND WHEEL RIM
- STEERING WHEEL ADJUSTABLE
- SEAT HEIGHT ADJUSTABLE

### SPECIFICATIONS

ENGINE	QUANCHAI
POWER	65HP
HYDRAULIC SYSTEM	TWO WAY
HYDRAULIC LIFT	DRAFT AND POSITION CONTROL, FLOAT
FLOW RATE	40L/MIN
CLUTCH	11" DOUBLE ACTION CLUTCH
GEARBOX	12F+12R SHUTTLESHIFT
PTO	540/1000
BATTERY	VARTA 12V/120A
MAX DUMP HEIGHT	3010mm
SAFE LIFT LOAD	800KG
MAX LIFT LOAD	900KG
OVERALL DIMENSION (mm)	3700 x 1770 x 2800
WEIGHT	3620KG
WHEEL BASE	1400/1400 - 1500mm
WHEEL MODEL	FRONT 280/70R20 REAR 380/85R24
AXLE BASE	2040mm



**Queensland**  
07 5465 6583  
sales@agking.com.au  
2 Summerholm Rd  
Hatton Vale QLD 4341

**Victoria & SA**  
0425 741 914  
salesvic@agking.com.au  
Unit 1 - 145 Wimble St  
Seymour VIC 3660

**Western Australia**  
08 6205 9302  
saleswa@agking.com.au  
9 Creative Street  
Wangara WA 6065

[www.agking.com.au](http://www.agking.com.au)